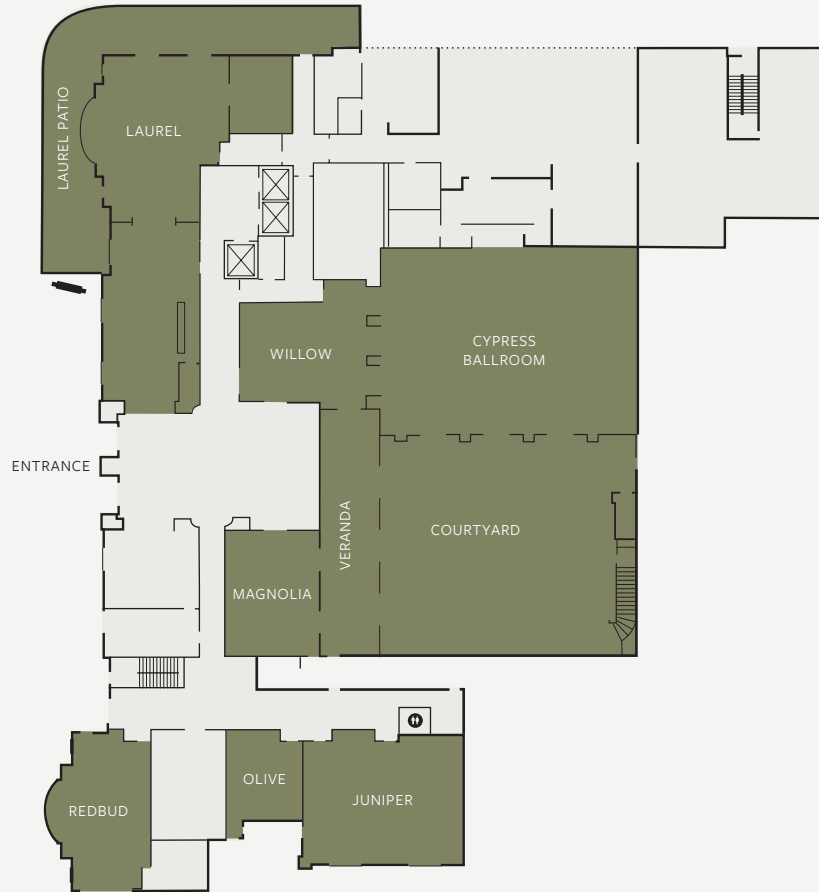









Hotel Viata™

AUSTIN

FLOOR PLAN & CAPACITY



FUNCTION ROOM	SIZE (SQ. FT.)	DIMENSIONS	CEILING	 BANQUET	 CONFERENCE	 THEATER	 CLASSROOM	 U-SHAPE	 RECEPTION	 HOLLOW SQUARE	EXISTING SETUP
CYPRESS BALLROOM	3,540	72' x 51'	13' x 15'	230	60	300	180	72	300	56	-
WILLOW	812	29' x 26'	13'	40	12	-	-	-	50	18	-
MAGNOLIA	800	25' x 32'	13'	-	24	60	40	27	50	30	-
COURTYARD	3,600	63' x 57'	-	200	-	150	-	-	300	-	-
VERANDA	1,000	66' x 13'	-	50	-	-	-	-	65	-	-
JUNIPER	1,400	42' x 33'	10'	80	16	110	84	33	100	44	-
OLIVE	376	20' x 20'	10'	12	-	-	-	-	-	-	-
REDBUD	733	38' x 22'	10'	50	38	70	39	24	50	36	-
LAUREL	1,200	39' x 32'	13'	-	-	-	-	-	-	-	45
LAUREL PATIO	320	32' x 10'	-	-	-	-	-	-	-	-	28
PRIVATE DINING ROOM	300	20' x 15'	13'	-	-	-	-	-	-	-	12

Book your special occasion with us today.

320 S Capital of Texas Highway West Lake Hills, Texas 78746 T 512 306 6400 hotelviata.com